

**Translin Antibody**  
**Catalog # ASC11331****Specification**

---

**Translin Antibody - Product Information**

Application	WB, IHC-P, IF, E
Primary Accession	<a href="#">Q15631</a>
Other Accession	<a href="#">NP_004613</a> , <a href="#">4759270</a>
Reactivity	Human, Mouse, Rat
Host	Rabbit
Clonality	Polyclonal
Isotype	IgG
Application Notes	Translin antibody can be used for detection of Translin by Western blot at 0.5 - 1 µg/mL. Antibody can also be used for immunohistochemistry starting at 5 µg/mL. For immunofluorescence start at 20 µg/mL.

**Translin Antibody - Additional Information**Gene ID **7247****Target/Specificity**

TSN; At least two isoforms of Translin are known to exist; this antibody will detect both.

**Reconstitution & Storage**

Translin antibody can be stored at 4 °C, stable for one year. As with all antibodies care should be taken to avoid repeated freeze thaw cycles. Antibodies should not be exposed to prolonged high temperatures.

**Precautions**

Translin Antibody is for research use only and not for use in diagnostic or therapeutic procedures.

**Translin Antibody - Protein Information**Name TSN ([HGNC:12379](#))**Function**

DNA-binding protein that specifically recognizes consensus sequences at the breakpoint junctions in chromosomal translocations, mostly involving immunoglobulin (Ig)/T-cell receptor gene segments. Seems to recognize single-stranded DNA ends generated by staggered breaks occurring at recombination hot spots.

**Cellular Location**

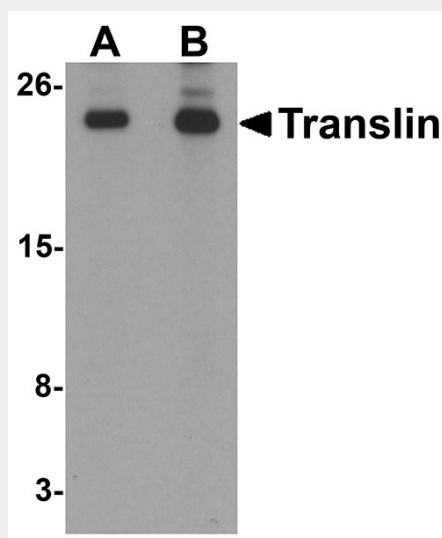
Cytoplasm. Nucleus

## Translin Antibody - Protocols

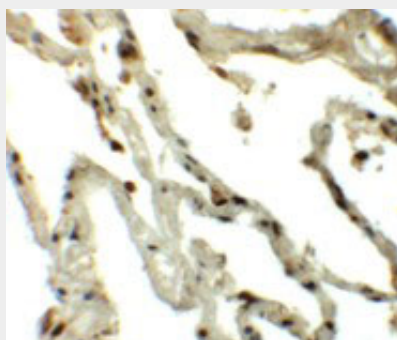
Provided below are standard protocols that you may find useful for product applications.

- [Western Blot](#)
- [Blocking Peptides](#)
- [Dot Blot](#)
- [Immunohistochemistry](#)
- [Immunofluorescence](#)
- [Immunoprecipitation](#)
- [Flow Cytometry](#)
- [Cell Culture](#)

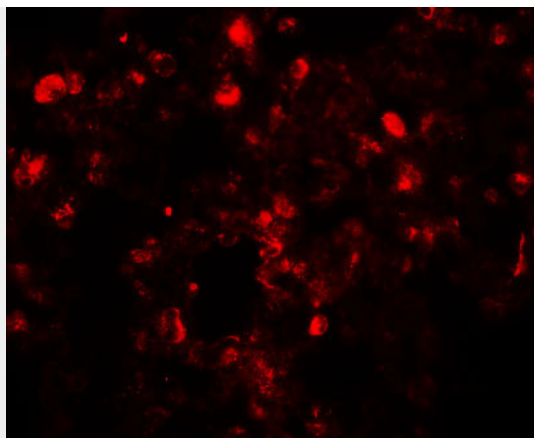
## Translin Antibody - Images



Western blot analysis of Translin in rat lung tissue lysate with Translin antibody at (A) 0.5 and (B) 1  $\mu$ g/mL



Immunohistochemistry of Translin in human lung tissue with Translin antibody at 5  $\mu$ g/mL.



Immunofluorescence of Translin in human lung tissue with Translin antibody at 20 µg/mL.

### **Translin Antibody - Background**

Translin Antibody: Translin is a DNA-binding protein which specifically recognizes conserved target sequences at the breakpoint junction of chromosomal translocations. Translin polypeptides form a multimeric structure that is responsible for its DNA-binding activity. Recombination-associated motifs and translin-binding sites are present at recombination hotspots and may serve as indicators of breakpoints in genes which are fused by translocations. These binding activities may play a crucial role in chromosomal translocation in lymphoid neoplasms. Recent evidence suggests that in combination with a binding partner Trax, Translin binds RNA and mediates trafficking in neurons.

### **Translin Antibody - References**

Aoki K, Susuki K, Sugano T, et al. A novel gene, Translin, encodes a recombination hotspot binding protein associated with chromosomal translocations. *Nat. Genet.* 1995; 10:167-74.  
Li Z, Wu Y, and Baraban JM. The Translin/Trax RNA binding complex: clues to function in the nervous system. *Biochim. Biophys. Acta* 2008; 1779:479-85